



# Opsamling på 5T

(Together To Twenty Ton in 20-20)

## - udbyttepotentialer og markvariation

Inspirationsmøde i Sakskøbinghallen

4. februar 2020

Otto Nielsen, NBR

## 5T – fase 1/2

**Fase 1**  
2014-2016

### Udbyttepotentialer

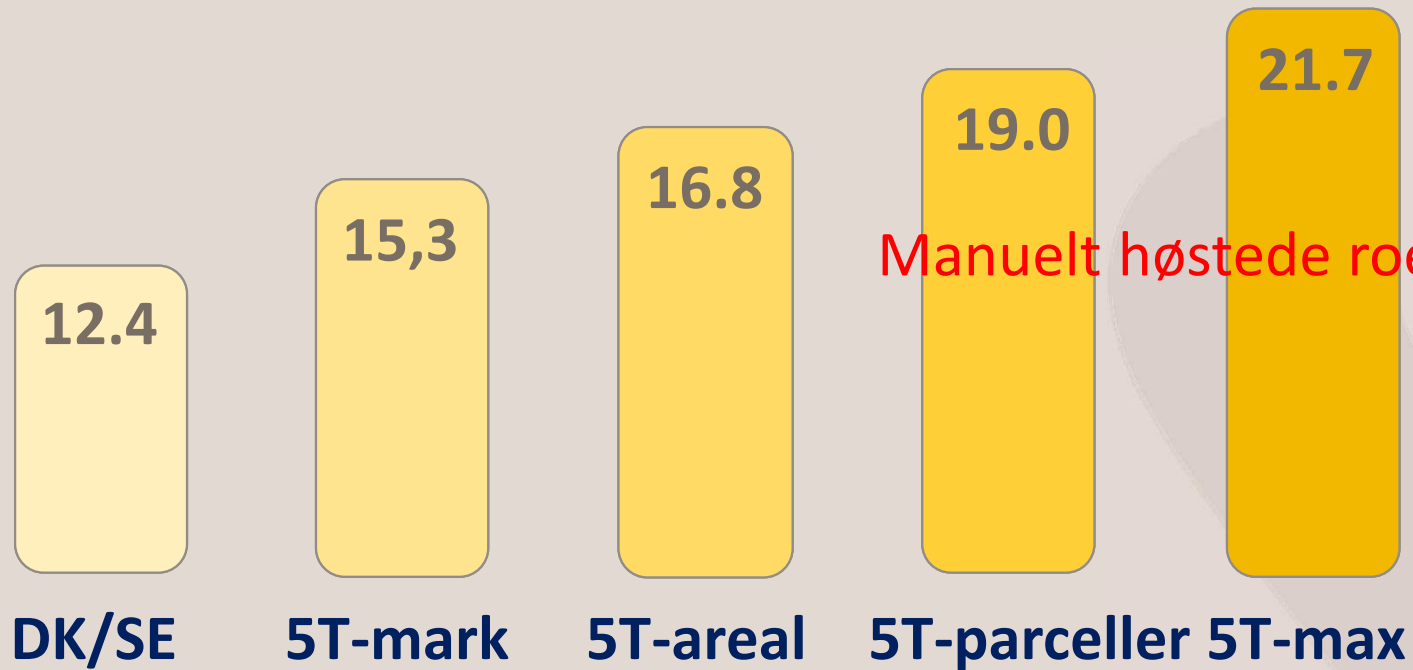
5 svenske + 6 danske dyrkere

**Fase 2**  
2017-2019

### Markvariation

Data fra omkring 150 marker (størstedelen danske)

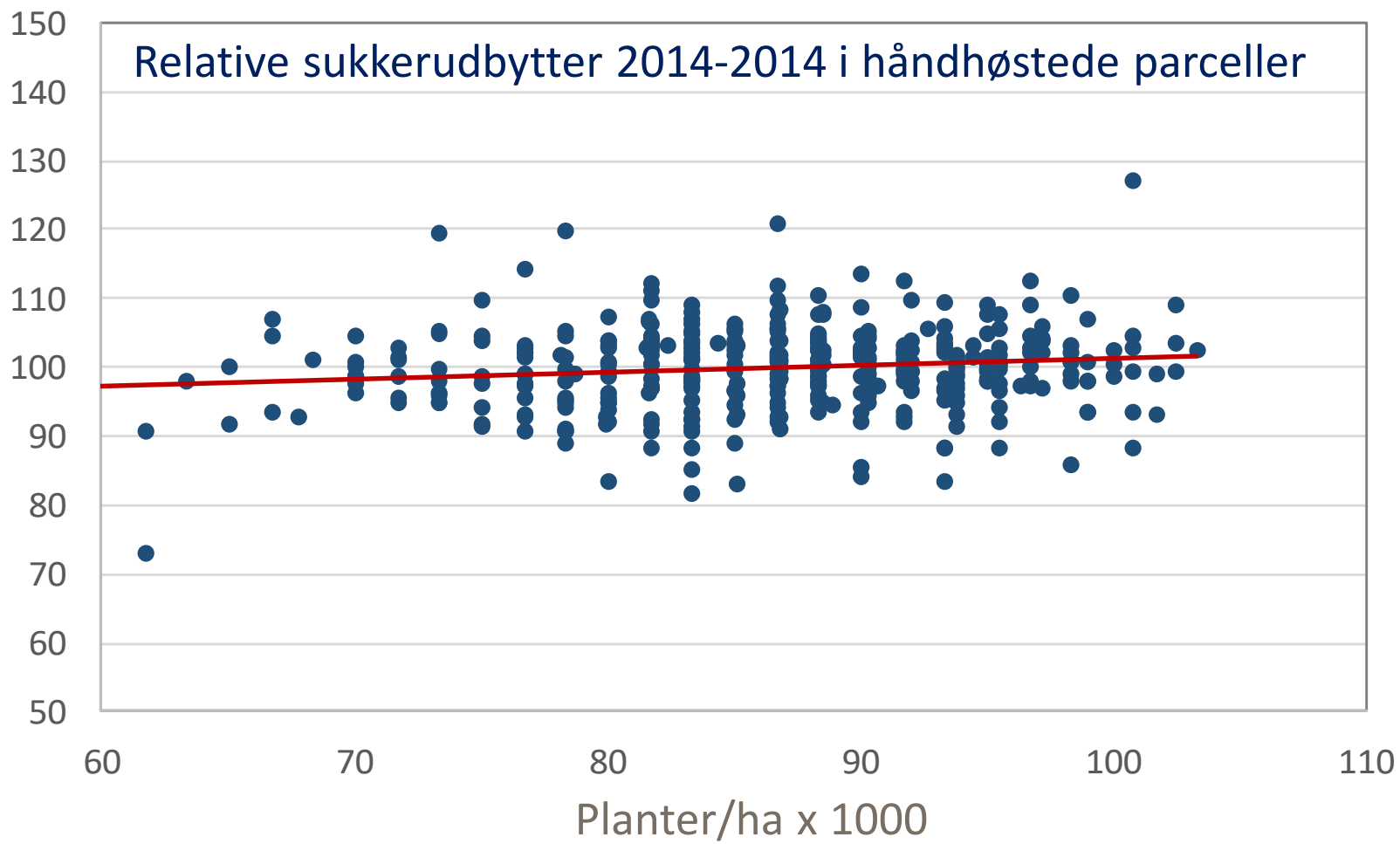
# Sukkerudbytte 2014-2016 – 5T-fase 1



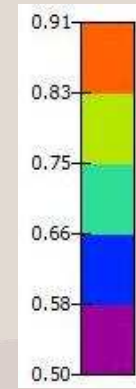
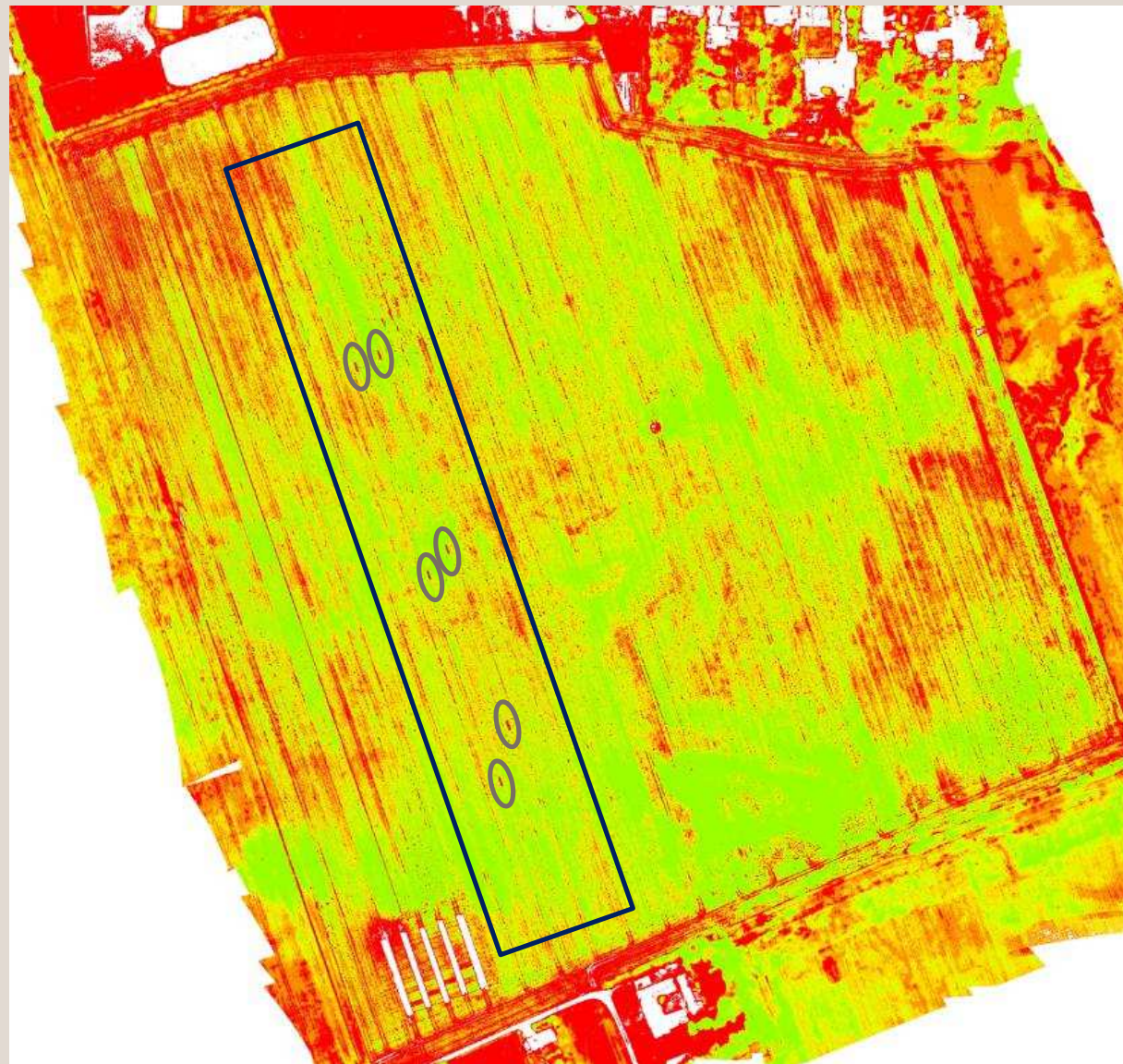
Manuelt høstede roer



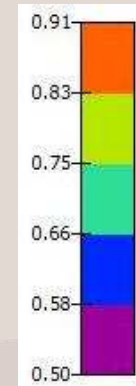
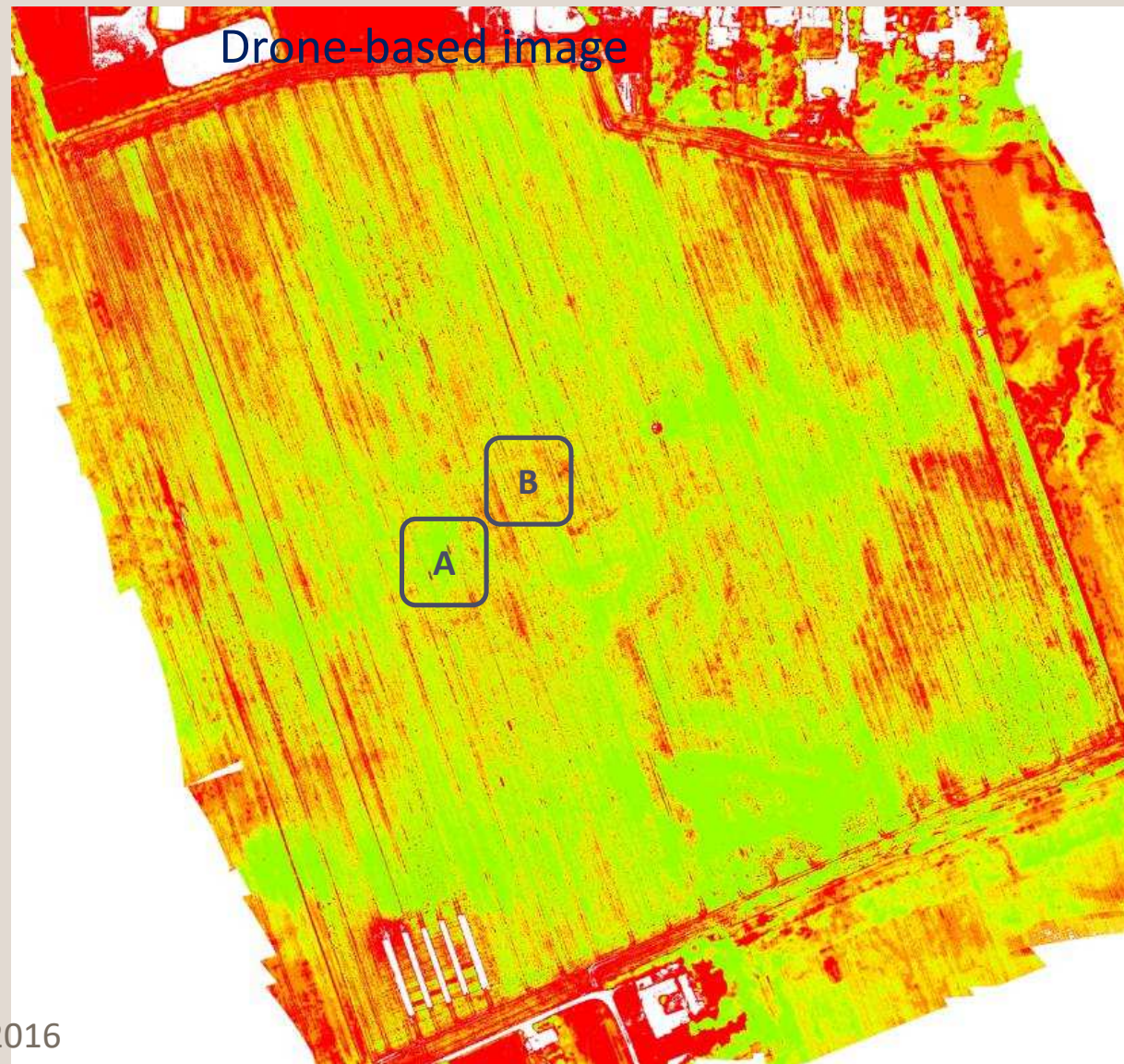
### Relative sukkerudbytter 2014-2014 i håndhøstede parceller



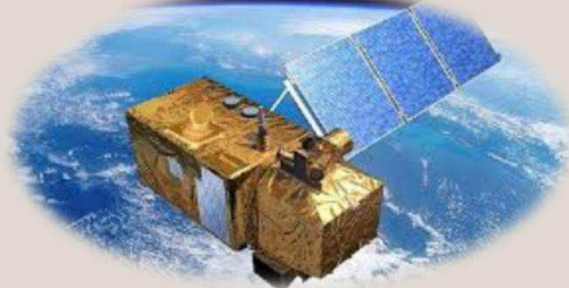
# 5T - Phase I



# 5T - Phase II



Tilvækst / NDVI



Sundhedsvurderinger



Bladanalyser



Er alt i orden?

Spørgeskema



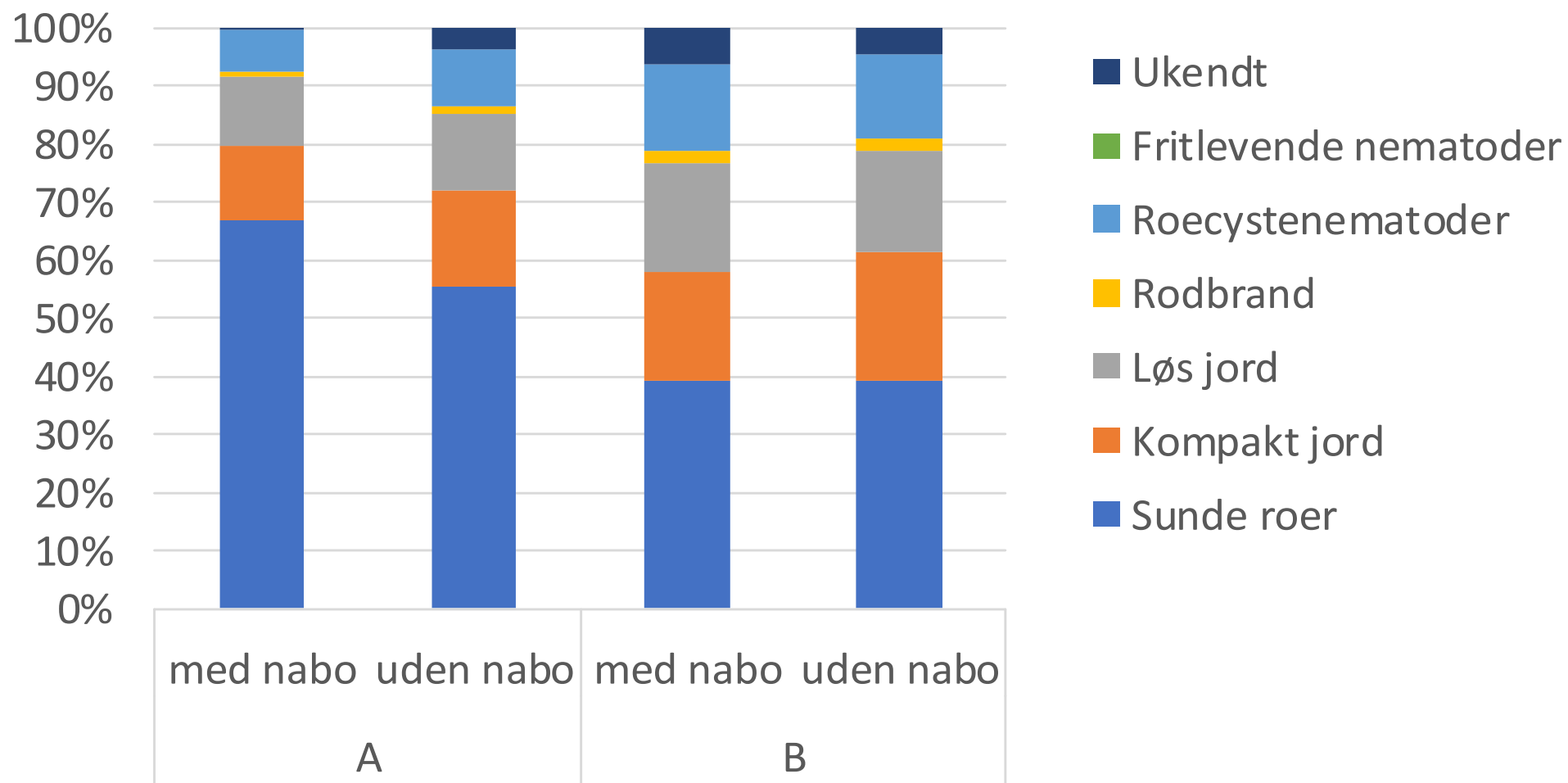
Jordanalyser



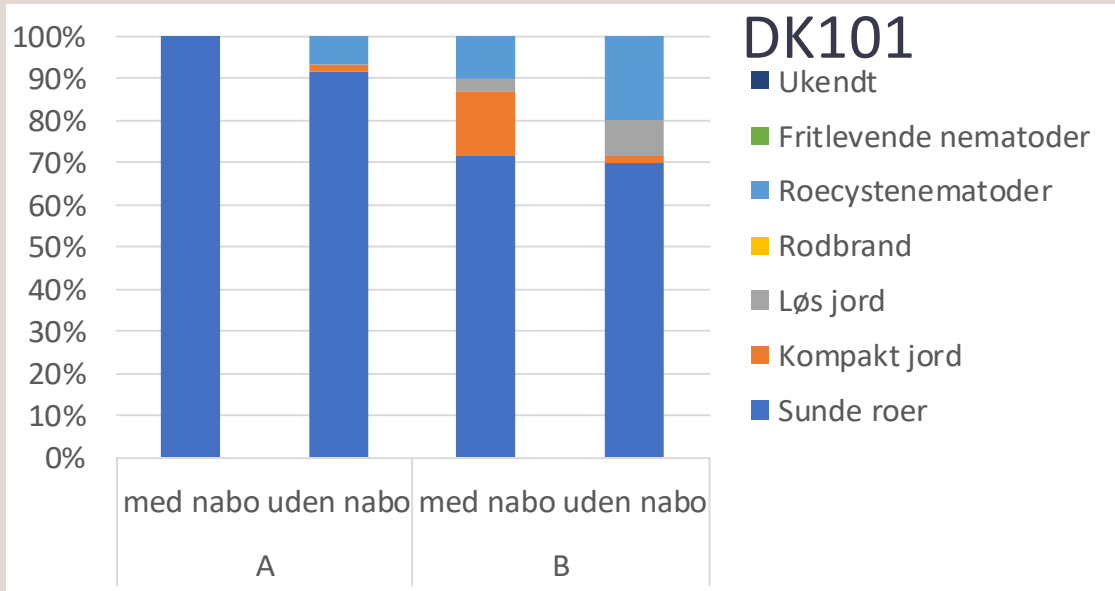
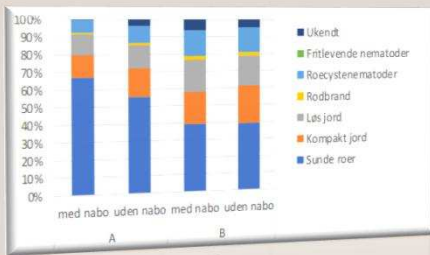
Høstudbytter



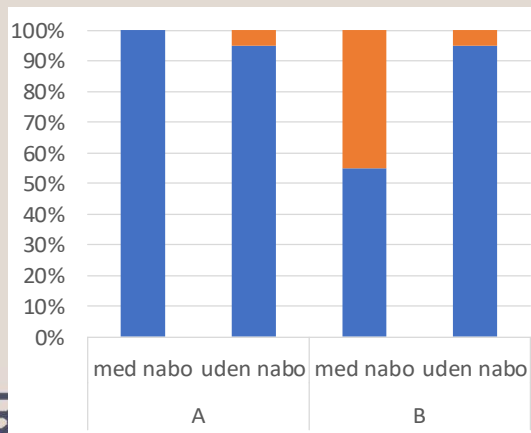
## Gennemsnit af 7.500 roer



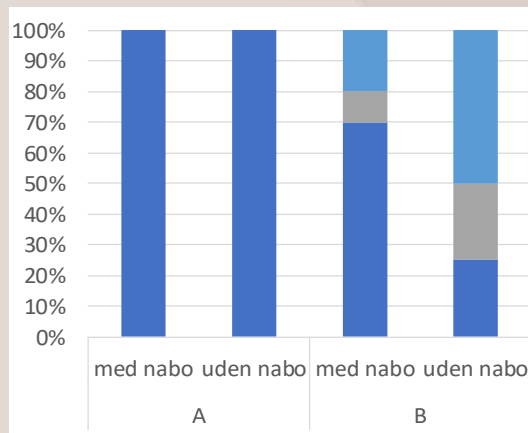




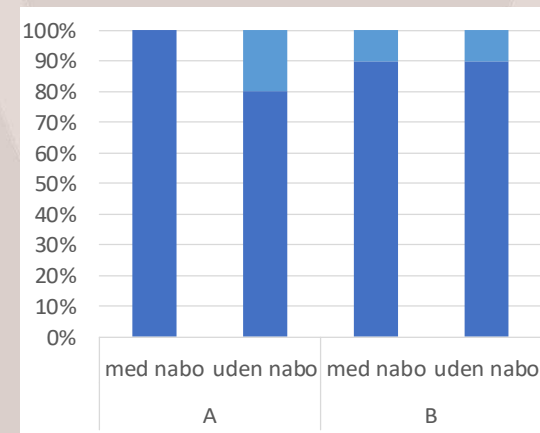
2017



2018



2019



Opsamling på 5T

Vi har mange data – hvordan får vi mest muligt ud af det?

Vi har prioriteret nemt tilgængelige data og begrænset antallet til A og B

Kun sunde planter kan give fuldt udbytte – vigtigt at vurdere rødderne

Hvad mener deltagende dyrkere?